



BCRP98-Z50T DC Contactor

Shen Yang 213 Control Electrics Co.,Ltd

The best value comes from the integrity of
Successful & working perfectly.



BCRP98-Z50T

Precision design DC contactor, although the tube body is small, it has more than ordinary DC switching value, up to 1000V.

The BCRP98-Z50T direct contactor product is often used in the rail transit direct system. The product is suitable for the use environment of harsh labor, and has provided reliable help for rail transportation.

Characteristics

- Small in size, compact in structure and strong in shock resistance.
- The main contact is made of strong material, wear-resistant, good conductivity, and has a high mechanical and electrical life.
- Permanent magnet arc extinguishing technology can quickly and completely extinguish the arc.
- The multi-fracture design of the main contact can greatly guarantee the stability of the product.
- The product has a wide control voltage, which can reach (-30%...+30%) Us, which can be controlled by DC or AC

Application

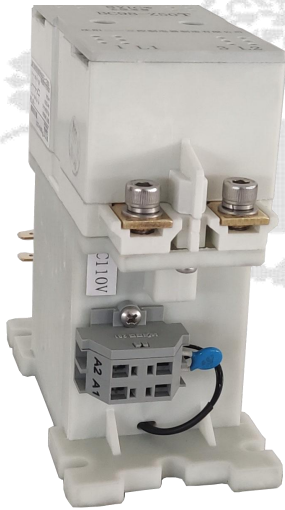
This product is widely used in high-speed rail, subway, intercity railway 1000V DC power distribution system, on-board charger, air-conditioning inverter power supply, emergency power supply, engineering vehicle power supply control, petrochemical field, ship electric propulsion system, power battery , energy storage converters and a series of DC applications.

Executive Standards

- IEC60947-1: 2011, Low-voltage switchgear and controlgear-Part 1: General rules, MOD
- IEC60947-4-1:2018, Low-voltage switchgear and controlgear-Part 4-1: Contactors and motor-starters-Electromechanical contactors and motor-starters(Including motor protector), MOD
- IEC 60077-1 :2017 , Railway applications—Electric equipment for rolling stock-Part 1: General service conditions and general rules, MOD
- IEC 60077-2 :2017 , Railway applications- Electric equipment for rolling stock-Part 2 : Electrotechnical components- - General rules, MOD

B CRP 98 - Z 50 T/20 DC24V

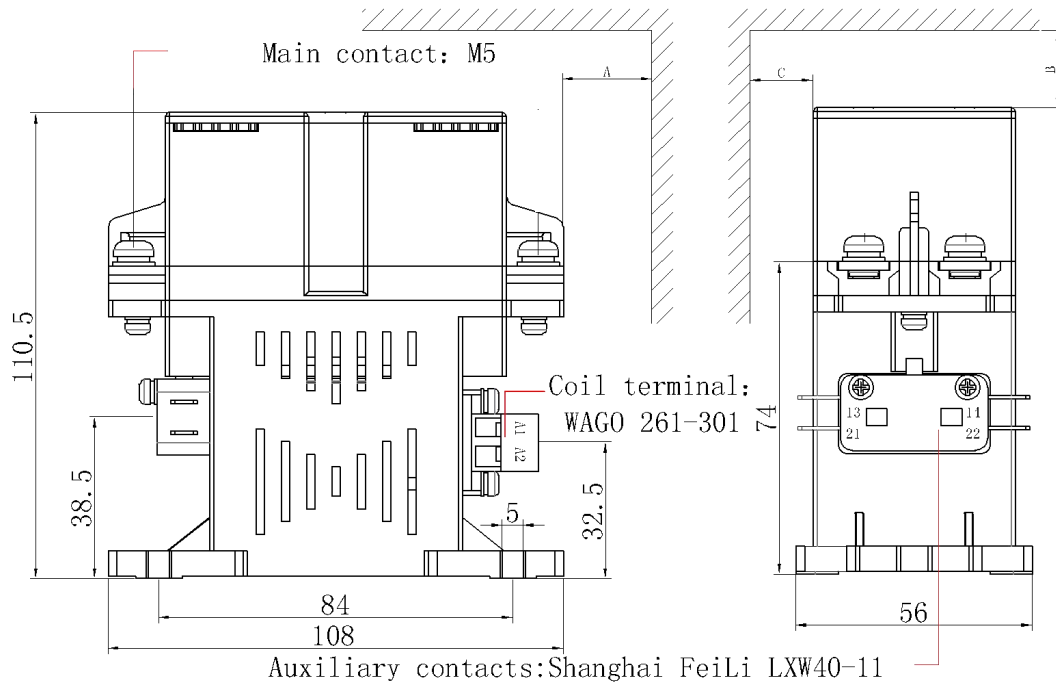
Example



Description

- ①B: Shen Yang 213 Control Electrics Co.,Ltd
- ②CRP: Contactor
- ③98: Design code
- ④Z: Main contact current is DC
- ⑤50: Rated operating current 50A
- ⑥T: Applicable to railway requirements, wide control voltage range (-30%...+30%)
- ⑦20: 2xSPST NO contacts
- ⑧DC24V : Coil control voltage (DC24V: 24VDC; DC72V :72VDC; DC80V : 75VDC; DC110V: 110VDC; DC220V : 220VDC)

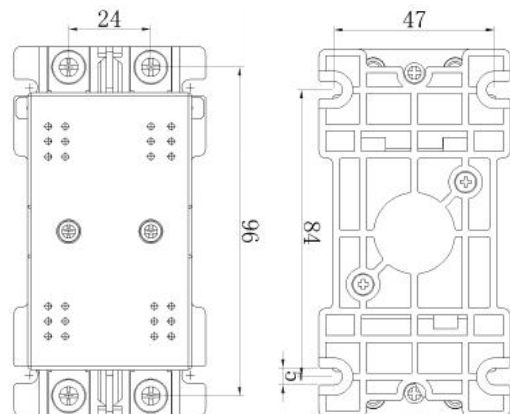
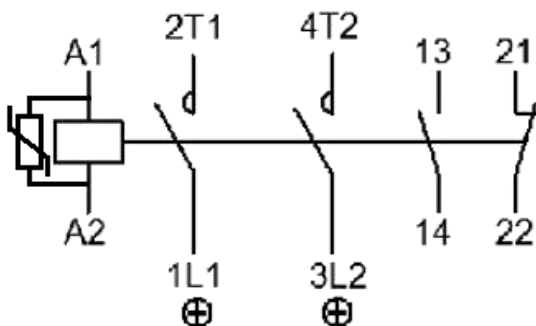
Dimension



		A	B	C
$P <$	Pe	10 mm	10 mm	10 mm
$P \geq$	Pe	10 mm	30 mm	20 mm

Wiring Diagram

Circuit Diagram



Voltage Type	DC	Auxiliary contact	1NO+1NC ⁽²⁾
Main Contact	2×SPST-NO ⁽¹⁾	Wiring terminal	quick connection 6.3 x 0.8 mm
Nominal Voltage Un	1000V	Rated control power supply voltage U _s	24/110/220/72/75 VDC
Rated Insulation Voltage U _i	1600V	Rated control power supply voltage range	24/110/220/72: 70%~130% 75: 52 ~ 94VDC
Rated impulse withstand voltage U _{imp}	10kV	Coil power consumption	15W
Pollution level	PD3	Control circuit: terminal block	0.8 ~ 2.5mm ² solid wire ⁽³⁾
Over-voltage	OV3	Degree of protection	IP00
Conventional heating current I _{th}	50A	Mechanical life	5,000,000 times
Connecting ability (resistive load T=0ms)	550A	Electrical life U _i = 1,200 V DC, I _{th} = 30 A, L/R = 1 ms	600,000 times ⁽⁴⁾
Disconnecting 1200V DC Main contacts in series	L/R≤1ms: 120A L/R < 15ms: 30A	Vibration	5g (20 ms half sinus) / 2g (5 ... 150 Hz)
Main contact: material	AgSnO ₂	Load factor	100%
Main contact: wiring terminal	M5	Installation method	Vertical / horizontal, keep upright
Use Category	AC-15:1.5A at 250V AC;	Ambient temperature	-40°C ~ +70°C
	DC-13:0.4A at 250V DC	Storage ambient temperature	-40°C ~ +70°C
	1.5A at 48V DC	Weights	0.8kg

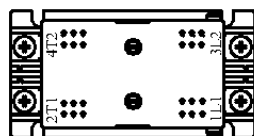
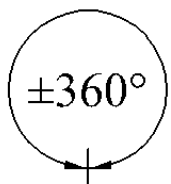
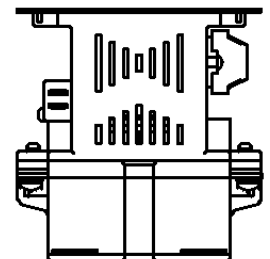
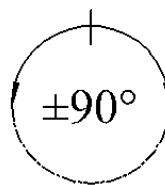
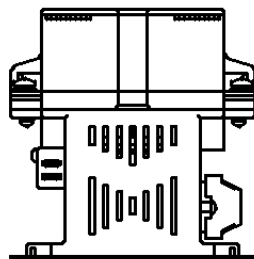
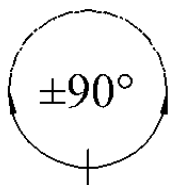
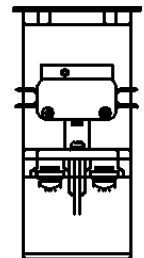
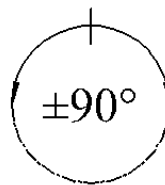
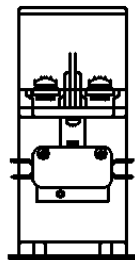
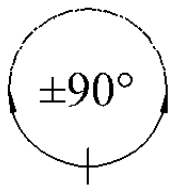
(1): 2×SPST-NO in series.

(2): Double pole double throw.

(3): WAGO261-301 is selected as the coil terminal.

(4): The auxiliary contact adopts Shanghai Feili LXW40-11, the electrical life of the auxiliary contact is ≥ 100,000 times, and it should be replaced in time according to the actual use.

Installation





Electrical Components for Rail Transit System and other Industrial System

Contactor

- Single-pole and multi-pole DC contactors
- High voltage AC/DC contactor
- Battery powered vehicles and power sources
- Railway application contactor
- DC emergency disconnect switch
- Special contactors meet various customer requirements

Circuit Breaker

- AC/DC applications.
- Modular and easy-to-install internal fittings with different functions.
- Miniature/miniature circuit breakers, molded case circuit breakers.
- Have a variety of protection functions, including long-delay, instantaneous, short-delay and ground fault (including zero-sequence current and residual current protection) protection.

Fuse

- Open, semi-closed, tubular and jet fuses
- Simple structure, convenient use and low price
- High voltage fuse and low voltage fuse
- Good current limiting characteristics and excellent breaking capacity

Connector

- Apply to industry standards
- The connector is suitable for the special requirements of communication engineering (MIL connector) for battery-powered machines
- Charging connectors and systems for railway engineering
- Connectors, including UIC connectors